

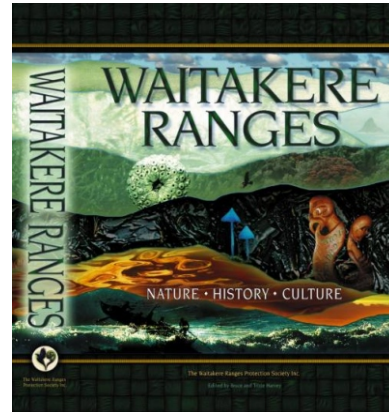
# Waitakere Ranges Book

## Hurry! Only 270 left!

**Yes! Please rush me the Waitakere Ranges book...**

Name: \_\_\_\_\_  
Address: \_\_\_\_\_  
Number of Books: \_\_\_\_\_  
Phone number (in case of queries) \_\_\_\_\_

**Please send your order and cheque to:  
Waitakere Ranges Protection Society  
PO Box 15668 New Lynn  
Waitakere City, 0640.  
Please enclose your payment with your order.  
Thank you for your support.**



### Hand-painted Ranges mugs

These stunning mugs uniquely designed for the Society by Karekare potter Lynda Harris, are individually crafted and beautifully painted to show the bush covered ranges and a view to the sea with a splendid kereru admiring karaka berries. The mugs cost \$35 each, including P&P and \$10 from each sale goes to the Society. These would make a superb gift - for you or a friend! The mugs are made to order so please allow 3-4 weeks for delivery.

**Please send your order to Waitakere Ranges Protection Society, PO Box 15668, New Lynn, Waitakere City, 0640.**

Sender:  
**The Waitakere Ranges Protection Society  
PO Box 15668  
New Lynn  
Waitakere City, 0640**



**Waitakere Ranges  
Protection Society Inc**

## Your President's Report



Happy New Year 2008 to all our members and friends. I hope that you have had a relaxing summer and enjoyed the long hot days in the ranges and on the coast.

We expect that this year will bring some long-standing matters to resolution. Firstly, the Waitakere Ranges Heritage Area Bill progressed into the Committee stage on Wednesday 20<sup>th</sup> March (which is the stage before the third and final reading of the Bill). Thanks to Labour, the Greens, the Maori Party, the Progressive Party and Taito Phillip Field for their support, giving a majority support for the Bill (61 Votes in favour). Unfortunately the National Party's strong opposition to the Bill has led to a deterioration in their behaviour in the House, including denigrating the Bill's honouring of Waitakere's Maori heritage, seeking to discredit the Councils and their representatives, and making disparaging comments about the community consultation carried out by the respective councils.

Secondly, we expect a decision from the Environment Court on the Swanson Structure Plan appeals which have occupied the Society greatly over the past few years.

The 35<sup>th</sup> AGM of the Society will be held on the 31 March and I urge all members to put this date in your diaries and attend the meeting to support the Society. Details of the meeting are in this newsletter and official notification will be posted out in early March.

# news

P O Box 15668, New Lynn, Waitakere City  
[www.waitakereranges.org.nz](http://www.waitakereranges.org.nz)

## Issue 136 FEBRUARY 2008

Congratulations to the executive's senior scientist, Graeme Ramsay for the very successful culmination of his life's work on the taxonomy of New Zealand's invertebrates with the launch of the definitive online database [www.bugz.org.nz](http://www.bugz.org.nz) More details are in this newsletter.

The Society extends its condolences to the family of Sir Edmund Hillary. Sir Ed might have been the first to climb the highest mountain in the world, but he was in my opinion far more important for being an advocate for social and environmental change in Nepal, New Zealand, and throughout the world as he touched the hearts of people everywhere with his practical wisdom.

Closer to home, he played a significant role in the environmental protection of the Waitakere Ranges, when he gave his endorsement to Waitakere City's West Coast Plan. And in 1998 Sir Ed signed Jack Colmar's "Waitakere Heritage Area" declaration (see box over page).

In an accompanying letter to Jack, Sir Ed wrote:



Sir Edmund Hillary (2006)  
Photo Courtesy of Graeme Mulholland  
Creative Commons License

"...I heartily support the establishment of the Waitakere Heritage Area. It is a magnificent piece of coastline and forest and Auckland is very fortunate to have it so close...I enthusiastically support the Waitakere Ranges Heritage Area."

For me I will always think of him with his family at the bach high on the cliffs above White's Beach, finding some solace on the Waitakere west coast as the Tasman rollers thunder in.





Your President's Report continued. . .

As I have said on a number of occasions before, your committee members rely on Society members to keep us informed of their concerns and issues of importance in their communities. Often your call will be the first that we know about an issue. Your executive committee's phone numbers and email addresses are published in the newsletter and we welcome your reports.

The Waitakere Ranges book continues to sell well and we have now only 270 books left in stock (from a total of 3000 in April 2006). It is not yet certain that we will reprint the book, so I advise you to be in quick and order your first edition copies now to avoid disappointment.

It is my hope that 2008 brings a new era to the ranges - one where the environment is well protected, and where landowners have certainty about their development rights. In parliamentary election year, members should ask candidates what they intend to do to better protect the environment of New Zealand which has for too long been falsely branded "clean and green". It is refreshing to see the truth about our environment finally becoming part of the mainstream media.



"Waitakere Heritage Area"

We the undersigned support the concept of a wilderness coastal park of 25,000 hectares stretching from Huia in the south to Muriwai in the north to be preserved in its natural state for future generations.

NAMEADDRESSSIGNATURE

Sir Edmund Hellary

278A Remuera Road

Auckland 5

COMMENTS ?

The West Coast is a wild and beautiful area that should be carefully protected

7

✓



Image courtesy Mike Nixon

Welcome to your first 2008 newsletter!

Your February WRPS Newsletter contains news and information,

Hope you're enjoying the summer and see you at the AGM.

Any queries, comments or contributions please contact Anna  
editor@waitakereranges.org.nz

Best wishes

The Executive Committee



Whatipu from Te Ahuahu Image courtesy John Edgar

Your Committee

Committee meetings are held on second Wednesday of the month

President:

John Edgar  
09 8128 555  
jedgar@iconz.co.nz

Vice-President:

Anna Fomison  
09 838 9665  
amfomison@gmail.com

Secretary:

Kath Dewar  
09 812 8406  
Kathdewar@paradise.net.nz

Treasurer:

Sandra Jones  
09 817 6102  
S.jones@auckland.ac.nz

Committee:

Mels Barton  
mels@wombatsenvironmental.co.nz

Trixie Harvey  
brutrix@xtra.co.nz

Mike Nixon  
mike.nixon@wstconnect.co.nz

Graeme Ramsay  
graemer@ww.co.nz

Lynda Williams  
witch2@ihug.co.nz

Greg Presland  
walaw@paradise.net.nz

Denise Yates  
denisejohuia@xtra.co.nz



# Festival Report 2008

Mels Barton and Anna Fomison



WRPS attended the Splore 08 festival held at Tapapakanga Regional Park from February 8<sup>th</sup> - 10<sup>th</sup>, taking our new display and stall equipment. The stall was manned and erected by Committee member Mels and Anna with assistance from Anna's partner Max, her daughter Sonja and Committee member Mike Nixon .



Our new equipment obtained through the ASB grant was fantastic and gave the Society a very professional look, which was commented on by many people. Both the gazebo and the display were very simple and quick to erect and coped with the very windy (and at times rainy) conditions well. The new chairs were the most comfortable on the site and the tables were lightweight and a good size. Everything folded and transported very easily in robust containers.



We had a lot of interest and were busy talking to people all day Friday and Saturday. Unfortunately the weather on Sunday brought events to a premature end and most people had left by lunchtime. The stall attracted all the "Westies" at the festival and most of them took a brochure, saying they really should join the Society, and we collected their details for the raffle.



We raffled the display copy of the Waitakere Ranges book for a koha donation and collected 84 names, addresses and emails. Only 5 people indicated they did not wish to be contacted by the Society in the future. This was a very successful outcome for us as our intention in attending the festival was to spread information about the Society to new arenas and a younger age group.

## Annual General Meeting

The 35th Annual General Meeting of The Waitakere Ranges Protection Society will be held at 7pm at the Arataki Visitor Centre on Monday 31 March 2008. All members and friends are welcome.

### AGENDA:

Welcome, Apologies, Announcements, Confirmation of Minutes of AGM 2007, Matters arising, Annual Report, Financial Report, Election of Officers and General Business.

### GUEST SPEAKER:

Dr. Bruce Hayward

"Construction and Destruction of the Waitakere Volcano"

The rocks that form the Waitakere Ranges of today were formed on the eastern slopes of one of New Zealand's largest volcanoes - the extinct Waitakere Volcano, which erupted intermittently between 22 and 15 million years ago. Since then, much of the volcanic island has been eroded away by incessant marine attack and rainwater runoff. This erosion has been interspersed by several periods of uplift which are largely responsible for the present height and tilted, flat top of the Waitakeres.

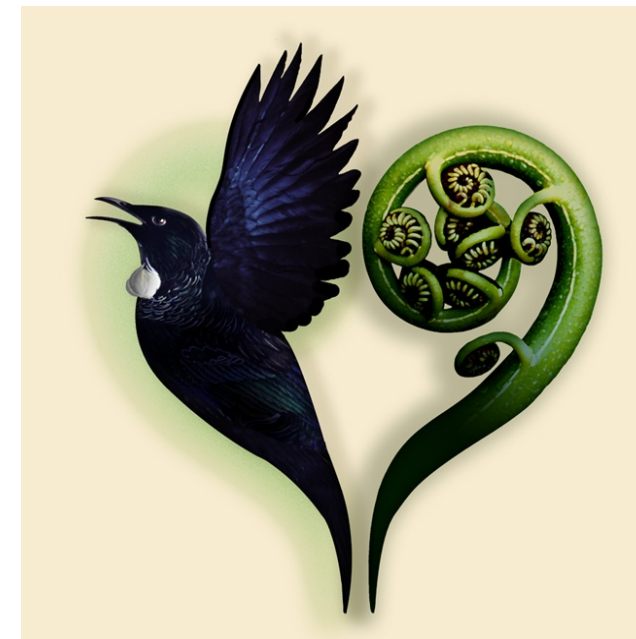


Image courtesy Ted Scott

## WRPS News Net

### Public forum on Auckland's governance

Waitakere City Council is planning a public forum in March at the Trusts Stadium as part of their consultation on Auckland's governance. The public are invited to attend and take part in the debate and have an input into Waitakere City's submission later in the year to the Royal Commission on Governance. The date will be well advertised by the city and we urge our members to have a say in the future of Auckland. Society members are welcome to pass their views onto the WRPS Committee

### WRPS meetings

Just a reminder that WRPS meetings are held on the second Wednesday of the month.

### Pest Report

From Mike Nixon, WRPS Executive Committee Member and Trustee of Lone Kauri Forest Restoration Trust.

This year, the Trust had a mix of private contractors, ARC rangers and volunteers to complete the refreshing of bait stations that are not already answered for. This took a bit of organising, but worked well as a model for the future, as some of us are time-poor now, and contractors ensure all hard to get to bait stations get done.

Stoat trapping started late, using freeze-dried rats, as there has been a shortage of rabbits this year. At the last operational meeting of the Lone Kauri Forest Restoration Trust agreement was reached to:

1. Expand the area to the south and north, working with the La Trobe project on the northerly push.
2. Remove some bait stations, subject to monitoring, as we may have over density in some areas.





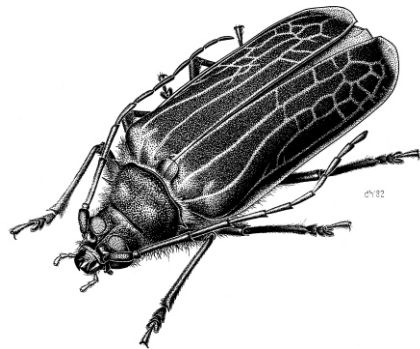
## BUGZONLINE

Graeme Ramsay

Do you need information about any New Zealand insect, spider, millipede, snail, woodlouse, worm or any other terrestrial invertebrate? Then use the BUGZONLINE database the digital library of New Zealand Invertebrates – [www.bugz.org.nz](http://www.bugz.org.nz).

At the touch of a button BUGZONLINE will give you access to a worldwide compilation of cross-referenced biodiversity information. A ceremony to launch this data-base, which comprises a quarter of a million pages of text was held at Canterbury University on December 12th last year.

This BUGZONLINE digital library is a full text electronic archive of the Bibliography of New Zealand Terrestrial Invertebrates which was compiled by Drs Graeme Ramsay and Trevor Crosby and published in 1992. Drs Raphael Didham and Stephen Pawson later co-ordinated a two-year project to design and build a full-text web-interface to the Bibliography so that now users can not only find where the information is but also see the full text of each reference. This is a great advantage as no library has a copy of every reference and many references are rare or difficult to obtain.

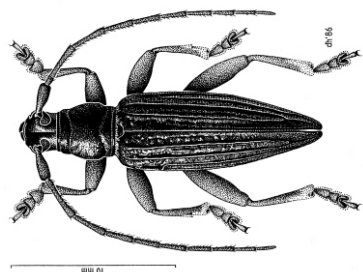


**Fig 1.** *Prionoplus reticularis* White (Coleoptera: Cerambycidae), huhu beetle. Body length 40 mm. For information on illustrating insects see Helmore, D.W. 1982. Drawings of New Zealand insects. *Bulletin of the Entomological Society of New Zealand* 8: 1-52.

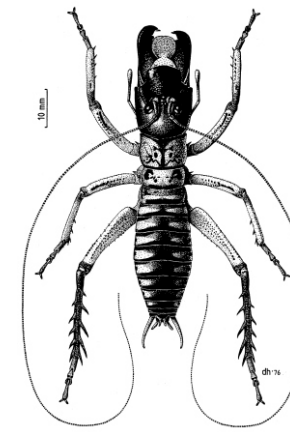
So now after 48 years of effort New Zealand has become the first country in the World to have developed a digital compilation of all the scientific literature pertaining to its terrestrial invertebrate fauna. The BUGZONLINE data-base also integrates with other data-bases such as uBio which thus enables users to conduct a truly global search for all associated information on New Zealand species. The data-base is a very useful and valuable research tool.

The Bibliography, which was published in 1992, is the culmination of thirty years of effort. It was commenced in 1962 by Graeme Ramsay and continued through the 70s and on by Graeme Ramsay and Trevor Crosby. It is a key which enables access to all the information locked away in libraries and which is often difficult and time consuming to find, to be made. The original Bibliography listed approximately 14,500 references and was as complete as we could make it up to 1985.

A special feature was its listing of University Theses and Research Projects which otherwise were largely unknown. Each reference was read and its subject content listed according to an authoritative list of 4000 terms. This vast task was carried out by groups of University students employed under the TEP, PEP, and Student Community Service Schemes of the Government Labour Department. They were employed during the University vacations to read and code the subject content of every reference.

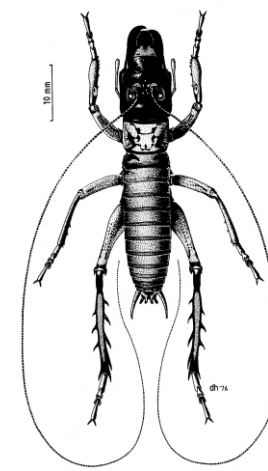


**Fig 23.** *Xylotoles costatus* Pascoe (Coleoptera: Cerambycidae), Pitt Island longhorn beetle, a protected species that is possibly extinct. Pascoe, F.P. 1875. Descriptions of new genera and species of New Zealand Coleoptera. – Part 1. *Annals and magazine of natural history* (4) 16: 210-223.

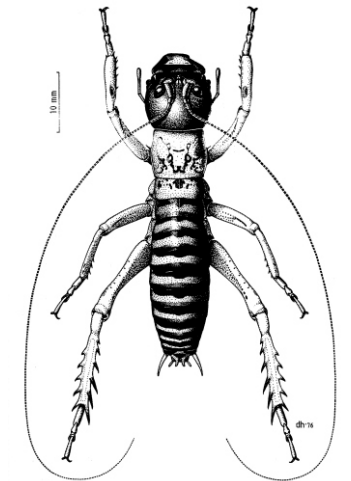


**Fig 9.** *Hemideina crassidens* (Blanchard) (Orthoptera: Stenopelmatidae), Wellington weta.

Field, L.Hill.; K.G.; Ball, E.E. 1980. Physiological and biophysical properties of the auditory system of the New Zealand weta *Hemideina crassidens* (Blanchard, 1851) (Ensifera: Stenopelmatidae). *Journal of comparative physiology* 141(1): 31-37.



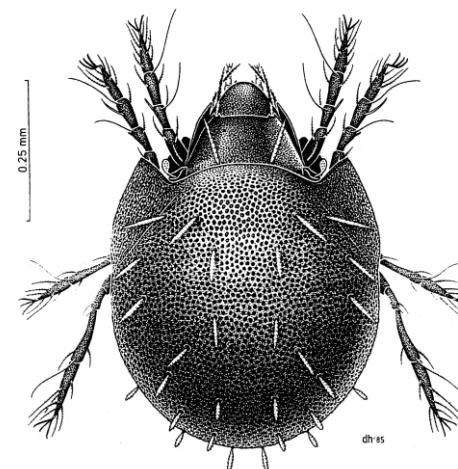
**Fig 13.** *Hemideina thoracica* (White) (Orthoptera: Stenopelmatidae), Auckland weta, male. Dale, P.S. 1967. *Wetanema hula* n.gen et sp., a nematode from the weta *Hemideina thoracica* (White). *New Zealand Journal of science* 10(2):402-406.



**Fig 26.** *Hemideina femorata* Hutton (Orthoptera: Stenopelmatidae), Canterbury weta, male. Sandlant, G.R. 1981. Aggressive behaviour of the Canterbury weta *Hemideina femorata* (Orthoptera: Stenopelmatidae). Its adaptive behaviour in resource allocation. Unpublished M.Sc. thesis, University of Canterbury, Christchurch. V11+ 80p.

A special feature was its listing University Theses and Research Projects which otherwise were largely unknown. Each reference was read and its subject content listed according to an authoritative list of 4000 terms. This vast task was carried out by groups of University students employed under the TEP, PEP, and Student Community Service Schemes of the Government Labour Department. They were employed during the University vacations to read and code the subject content of every reference.

New Zealand Lottery Board (Golden Kiwi) grants enabled the employment of qualified persons at times. For instance, Dr Ruud Kleinpaste worked with the Lepidoptera (moths and butterflies) references. The information was coded according to a numerical hierarchical coding system developed by the mathematician Dr Steven Tucker. This had the advantage of making the data-base versatile and able to be used for a variety of different investigations and reviews. After a gestation period of 48 years the birth of BUGZONLINE gives great satisfaction to your committee member Dr Graeme Ramsay.



**Fig 27.** *Ramsayellus grandis* (Hammer) (Acari: Ramsayellidae). Luxton, M. 1985. Crptostigmata (Arachnida: Acari) – a concise view. *Fauna of New Zealand* 7: 1-106